



Red Pine Exploration's Root Vein Returns Results up to 88 g/t Gold over 1 metre

Toronto, Ontario – November 2, 2017 – Red Pine Exploration Inc. (TSX-V: RPX) (“Red Pine” or “the Company”) has received assay results from the Company’s Summer 2017 surface sampling program of the Root Vein and the associated stockwork. The Root Vein is located north of the existing resource – Figure 1.

Root Vein System Channel Results*

Red Pine systematically channel sampled the exposure of the Root Vein and associated stockwork. Channel samples were taken in well exposed parts of the system and orientated perpendicular to strike. Figure 2 illustrates the location of the trenches with respect to the exposed Root Vein as well as their spatial association to each other.

*Readers are cautioned that composite channel samples are taken over a representative length in the targeted vein and stockwork system and as such remain selective by nature. The grades and mineralization present are not necessarily representative of the mineralization associated with the Root Vein.

Highlights Include:

- Trench RV-2: 4m @ 4.87g/t gold
- Trench RV-3: 4m @ 4.40g/t gold
- Trench RV-5: 3m @ 8.10g/t gold
- Trench RV-6: 2m @ 10.78g/t gold
- Trench RV-7: 4m @ 25.73g/t gold
- Trench RV-8: 1m @ 79.7g/t gold

The results of ALL the channel samples are as follows:



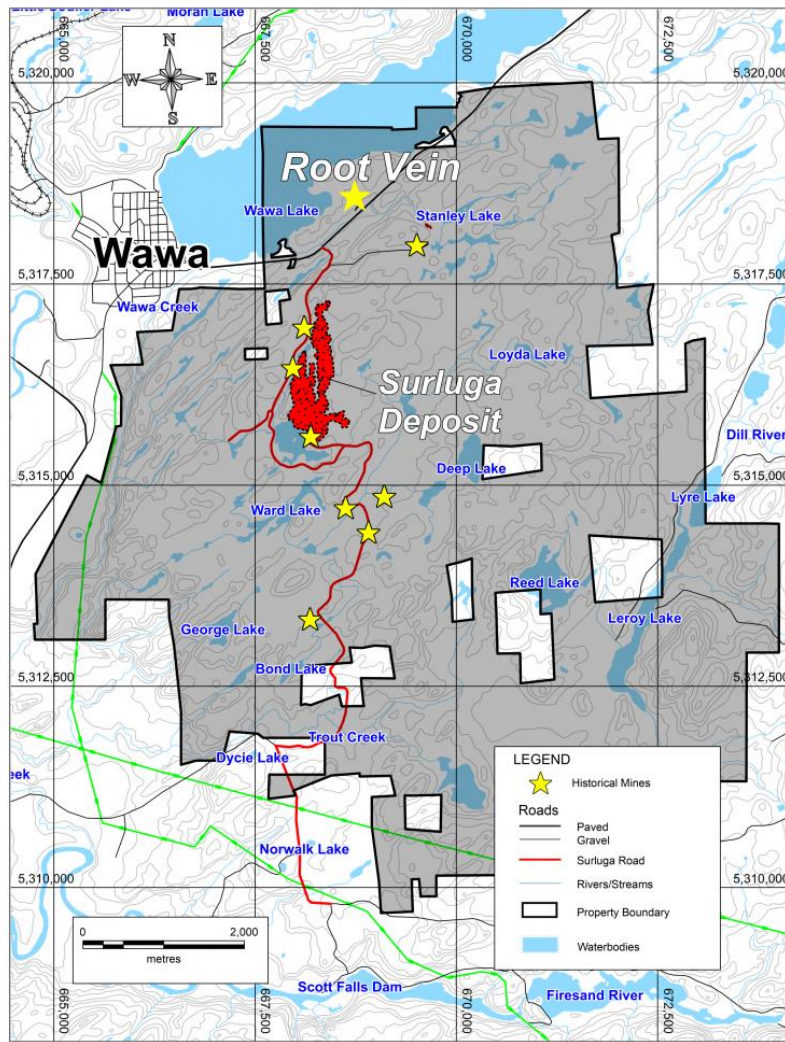
Channel Number	From (m)	To (m)	Gold g/t	Identifier	Length (m)	Composite Gold g/t
RV-1	0	1	4.37	Stockwork		
RV-1	1	2	0.857	Stockwork		
RV-1	2	3	2.38	Stockwork		
RV-1	3	4	1.74	Stockwork		
RV-1	4	5.6	2.76	Stockwork	5.6	2.46
RV-2	0	1	1.95	Stockwork		
RV-2	1	2	2.38	Stockwork		
RV-2	2	3	0.718	Stockwork		
RV-2	3	4	5.97	Stockwork		
RV-2	4	5	2.22	Stockwork		
RV-2	5	6	4.48	Stockwork		
RV-2	6	7	6.82	Stockwork	7	3.51
				including	4	4.87
RV-3	0	1	0.087	Stockwork		
RV-3	1	2	0.56	Stockwork		
RV-3	2	3	1.2	Stockwork		
RV-3	3	4	1.13	Stockwork		
RV-3	4	5	1.29	Stockwork		
RV-3	5	6	4.35	Stockwork		
RV-3	6	7	9.75	Stockwork		
RV-3	8	9	1.37	Stockwork		
RV-3	9	10	2.14	Stockwork	10	2.19
				including	4	4.40



RV-4	0	1	7.9	Stockwork		
RV-4	1	2	0.298	Stockwork		
RV-4	2	3	1.93	Stockwork		
RV-4	3	4	0.222	Stockwork		
RV-4	4	5	3.79	Stockwork		
RV-4	5	6	0.739	Stockwork		
RV-4	6	7	0.171	Stockwork		
RV-4	7	8	0.205	Stockwork	8	1.91
RV-5	0	1	2.03	Stockwork		
RV-5	1	2	20.3	Stockwork		
RV-5	2	3	1.96	Stockwork	3	8.10
RV-6	0	1	1.27	Stockwork		
RV-6	1	2	0.041	Stockwork		
RV-6	2	3	0.05	Stockwork		
RV-6	3	4	12.8	Stockwork		
RV-6	4	5	8.75	Stockwork	5	4.58
				including	2	10.78
RV-7	0	1	88.5	Root Vein		
RV-7	1	2	0.741	Stockwork		
RV-7	2	3	3.48	Stockwork		
RV-7	3	4	10.2	Stockwork	4	25.73
RV-8	0	1	79.7	Root Vein	1	79.7
RV-9	0	1	0.059	Stockwork		

RV-9	1	2	3.36	Stockwork		
RV-9	2	3	0.033	Stockwork		
RV-9	3	4	1.08	Stockwork		
RV-9	4	5	0.59	Stockwork		
RV-9	5	6	0.03	Stockwork		
RV-9	6	7	5.66	Stockwork	7	1.54

Figure 1 - Locations of the Root Vein and Stockwork



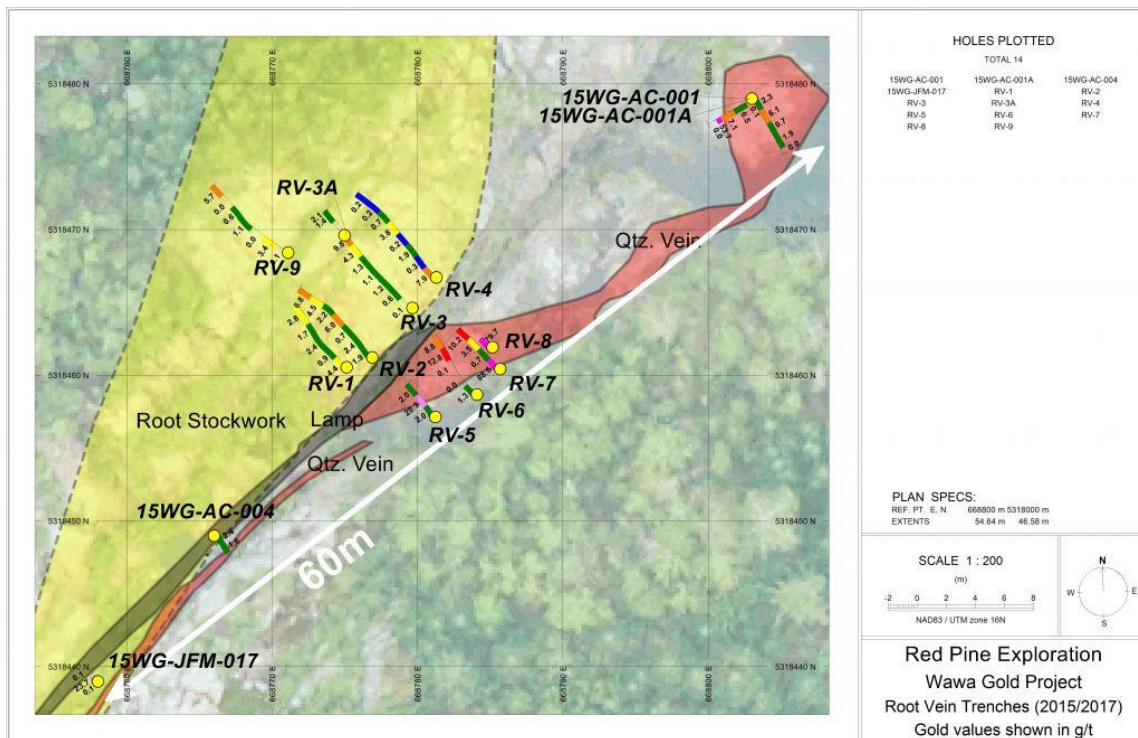


Quentin Yarie, President and CEO of Red Pine, stated, *“The Root Vein has always been an area of interest to us. Recent identification of the potential for the stockwork to contain gold significantly changed our interest and we conducted the channel sampling program to assess the viability of the system to host gold.”*

Red Pine Plans Continued Exploration – Root Vein Target of Interest

The Company will continue with its current exploration program which consists of both continuous operation of two drills and sampling of historic core. These results from the root vein warrant further investigation and this system within the hanging wall of the Jubilee Shear Zone will be targeted for drilling this winter.

Figure 2 – Plan map showing the surface trace of the channel samples at the Root Vein



On-site Quality Assurance/Quality Control (“QA/QC”) Measures

Channel samples were transported in security-sealed bags for analyses to Activation Laboratories Ltd. in Ancaster, Ontario. Individual samples are labeled, placed in plastic sample bags and sealed. Groups of samples are then placed into durable rice bags and then shipped. The remaining coarse reject portions of the samples remain in storage if further work or verification is needed..



Red Pine has implemented a quality-control program to comply with best practices in the sampling and analysis of drill core. As part of its QA/QC program, Red Pine inserts external gold standards (low to high grade) and blanks every 20 samples in addition to random standards, blanks, and duplicates.

Qualified Person

Quentin Yarie, P.Geo. is the Qualified Person responsible for preparing, supervising and approving the scientific and technical portions of this news release outside the scope of the Independent reporting of the Exploration Targets and is responsible for overseeing all aspects of the company's exploration programs.

About Red Pine Exploration Inc.

Red Pine Exploration Inc. is a gold and base-metals exploration company headquartered in Toronto, Ontario, Canada. The Company's common shares trade on the TSX Venture Exchange under the symbol "RPX".

Red Pine has a 60% interest in the Wawa Gold Project with Citabar LLP. holding the remaining 40% interest. Red Pine is the Operating Manager of the Project and is focused on expanding the existing gold resource on the property.

For more information about the Company visit www.redpineexp.com or contact:

- Quentin Yarie, President & CEO, (416) 364-7024, qyarie@redpineexp.com
- Mia Boiridy, Investor Relations,, (416) 364-7024, mboiridy@redpineexp.com

This News Release contains forward-looking statements. In some cases, you can identify forward-looking statements by terminology such as "may", "should", "expects", "plans", "anticipates", "believes", "estimates", "predicts", "potential" or "continue" or the negative of these terms or other comparable terminology. These statements are only predictions and involve known and unknown risks, uncertainties and other factors that may cause our or our industry's actual results, levels of activity, performance or achievements to be materially different from any future results, levels of activity, performance or achievements expressed or implied by these forward-looking statements.

Although the Company believes that the assumptions and factors used in preparing the forward-looking information in this news release are reasonable, undue reliance should not be placed on such information, which only applies as of the date of this news release. The Company disclaims any intention or obligation to update or revise any forward-looking information, whether as a result of new information, future events or otherwise, other than as required by law.



Neither TSX Venture Exchange nor its Regulation Services Provider (as that term is defined in policies of the TSX Venture Exchange) accepts responsibility for the adequacy or accuracy of this release.